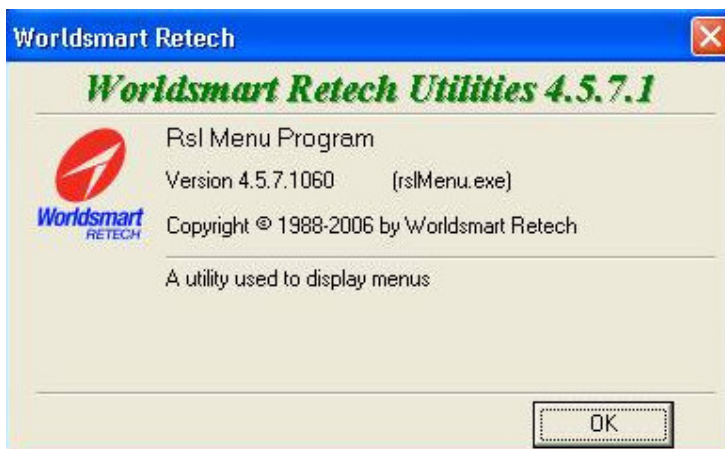


EPAY REQUIREMENTS

If you were a Dialtime Customer and are now requesting information about installing EPAY, please find below the requirements you will need to have EPAY.

Your Back Office System must be at least 4.5 Version to find this out simply go in Grocery Manager Main Menu on the top left hand side there is an option **HELP**, click on this and it will show you your version and numbers as below
i.e. Version 4.5.7.1060



You will also need Broadband connected to your Back Office System as it needs an uninterruptable link to the internet. You will need to speak to your Telecommunications Provider regarding this. i.e. Telstra/Optus

Lastly your registers will need to be at least Semi Touch Registers.

If you have any further queries please send a Remote Support Attention to Katrina Smith EPAY QUERIES

Alternatively you can contact me on 07 33402588.